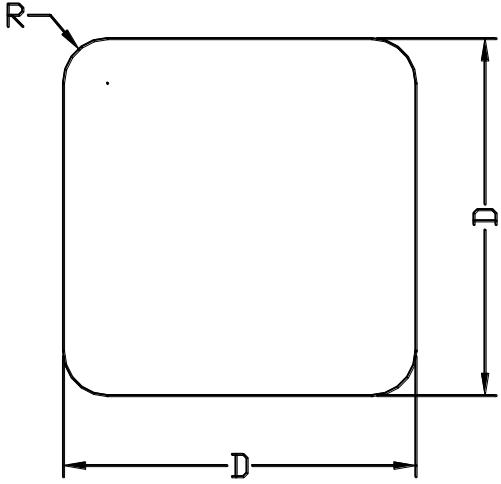
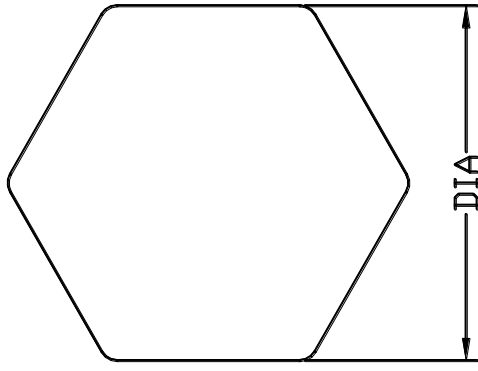


K1

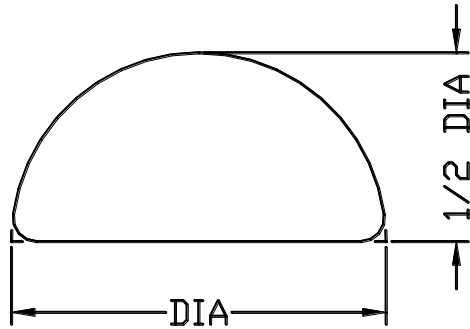
<p>SQUARE BAR & WIRE</p> 	<p>☞ 300 Series Stainless Steel Solid Solution Treatment, Cold Working Finish (1/12H-1/8H) Or In Accordance With Indicated Hardness Requirement.</p> <p>★ Production Range:</p> <p>Max. Size For Opposite Side: 25mm or 1" Min. Size For Opposite Side: 0.3mm</p> <p>☞ Other Materials:</p> <ul style="list-style-type: none"> a. 400 Series Stainless Steel b. Low, Medium & High Carbon Steel c. Various Alloy Steel & Carbon Tool Steel (SCM. SUP. SK., etc.) d. Brass Metal & Brass Alloy e. Titanium Metal <p>Production Can Be Made According To Indicated Material & Hardness Requirement.</p> <p>★ Production Range:</p> <p>Max. Size For Opposite Side: 25mm or 1" Min. Size For Opposite Side: 0.3mm</p>
---	---

K2

<p>HEXAGON BAR & WIRE</p> 	<p>☞ 300 Series Stainless Steel Solid Solution Treatment, Cold Working Finish (1/12H-1/8H) Or In Accordance With Indicated Hardness Requirement.</p> <p>★ Production Range:</p> <p>Max. Size For Opposite Side: 28mm OR 1 1/8" Min. Size For Opposite Side: 0.5mm</p> <p>☞ Other Materials:</p> <ul style="list-style-type: none"> f. 400 Series Stainless Steel g. Low, Medium & High Carbon Steel h. Various Alloy Steel & Carbon Tool Steel (SCM. SUP. SK., etc.) i. Brass Metal & Brass Alloy j. Titanium Metal <p>Production Can Be Made According To Indicated Material & Hardness Requirement.</p> <p>★ Production Range:</p> <p>Max. Size For Opposite Side: 28mm OR 1 1/8" Min. Size For Opposite Side: 0.5mm</p>
--	---

K3

STANDARDIZED HALF ROUND BAR & WIRE



☞ 300 Series Stainless Steel

Solid Solution Treatment, Cold Working Finish (1/12H- 1/8H) Or In Accordance With Indicated Hardness Requirement.

☞ Other Materials:

k. 400 Series Stainless Steel

l. Low, Medium & High Carbon Steel

m. Various Alloy Steel & Carbon Tool Steel (SCM. SUP. SK., etc.)

Production Can Be Made According To Indicated Material & Hardness Requirement.

☞ Production Range:

DIAMETER 1/2"(12.7mm)

DIAMETER 5/8"(15.87mm)

DIAMETER 3/4"(19.05mm)

DIAMETER 1"(25.4mm)

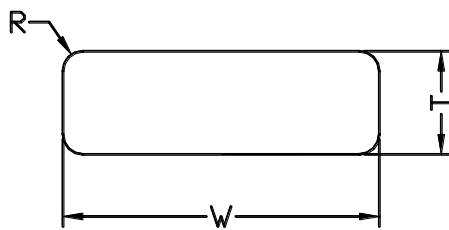
☞ Orders Can Be Taken Exclusive Of The Above Described Specifications.

MIN DIAMETER 0.02"(0.5mm)

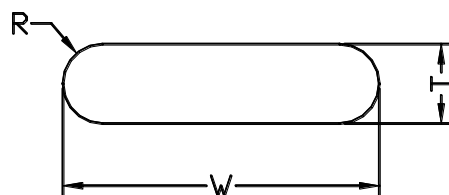
MAX DIAMETER 1 3/8"(34.925mm)

K4

FLAT (RECTANGLE) BAR & WIRE



FLAT BAR & WIRE WITH RADIUS GAUGES ON BOTH EDGES



☞ 300 Series Stainless Steel

Solid Solution Treatment, Cold Working Finish (1/12H- 1/8H) Or In Accordance With Indicated Hardness Requirement.

☞ Other Materials:

n. 400 Series Stainless Steel

o. Low, Medium & High Carbon Steel

p. Various Alloy Steel & Carbon Tool Steel (SCM. SUP. SK., etc.)

q. Brass Metal & Brass Alloy

r. Titanium Metal

Production Can Be Made According To Indicated Material & Hardness Requirement.

★ Production Range:

Max T : 24.0mm W=55.0mm

Min T : 0.15mm W=0.5mm

Necessary Condition:

Cross Section Area Has To Be Less Than 800mm².

☞ Radius Gauge (Both Edges Or Four Corners). With Or Without Indication, Processed In Accordance With Requirements.

☞ Straightening With High Straightness.